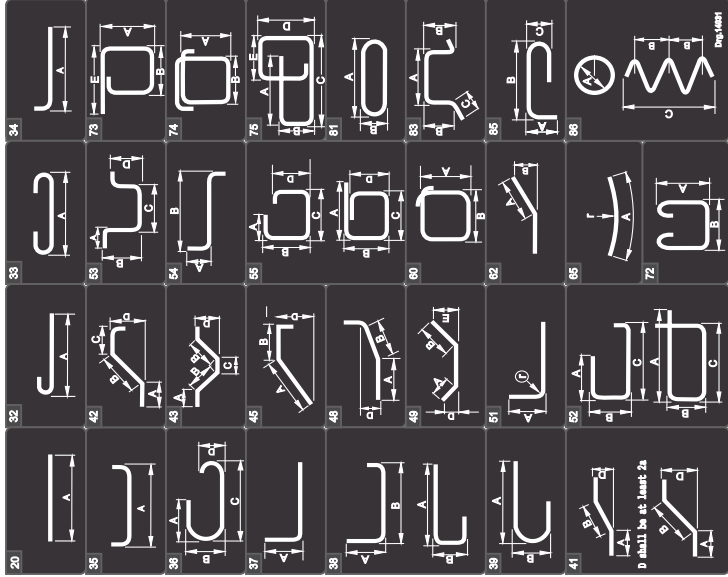


SHAPE CODES



NOTE 1 Use shape code 99 for all other shapes. A dimensioned sketch of the shape shall be given in the bending schedule.

NOTE 2 Radii of all bends are standard unless r is given in the bending schedule.

NOTE 3 All dimensions are external (outside) dimensions

Rebar weight and standard mesh tables

Rebar

Y (Deformed) Bar High Yield Steel 450 Mpa									
	Y6	Y8	Y10	Y12	Y16	Y20	Y25	Y32	Y40
kg/m	0.222	0.395	0.617	0.888	1.580	2.470	3.850	6.310	9.850

Mesh

Fabric	Nominal pitch		Nominal diameter		Cross-section area per meter width		Nominal mass
	LONGITUDINAL mm	CROSS mm	LONGITUDINAL mm	CROSS mm	LONGITUDINAL mm ² /m	CROSS mm ² /m	kg/m ²
888	200	200	12	12	565	565	8-88
746	200	200	11	11	475	475	7-46
617	200	200	10	10	393	393	6-17
500	200	200	9	9	318	318	5-00
395	200	200	8	8	251	251	3-95
311	200	200	7-1	7-1	197	197	3-11
*245	200	200	6-3	6-3	156	156	2-45
*193	200	200	5-6	5-6	123	123	1-93
*100	200	200	4	4	63	63	1-00

1. The standard sheet size is 6m (longitudinal) x 24m (cross)
2. *These fabrics are available in 60m x 2.4m rolls
3. The reference number is the nominal mass in kilograms/m² multiplied by 100
4. Workings of sheets required: 2m to be covered x 1.15 / 1.44 ~ rounded + sheets required